



Spotlight on...

Emma Wilsher



Emma is a Portfolio Manager and qualified accountant based at our Letchworth office.



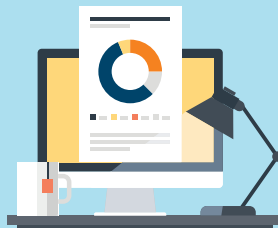
Joined in **2005**

Became **Portfolio Manager** in **2020**



Responsibilities

- Business advice
- SMEs
- Accounts preparation
- Corporation Tax



Specialisms

- Audit (incl. EU LIFE Grant)
- Charities
- ATOL
- Healthcare



Emma on **audit**: "Our audits are led by personable professionals that truly care about your company's performance, and our aim is to arm you with the insight and tools that you need to manage your business more effectively."

Emma on **healthcare**: "The healthcare industry interests me because it's niche; it's different to what we normally do. Considering all the various rules and regulations that come with operating in the sector, there is an opportunity to provide a totally 'bespoke' service."

Emma on **the future of accountancy**: "Looking ahead to the future of accountancy, basic compliance services will not be enough; technical advisory will be more in demand, there is no doubt. When it comes to finding the right firm of accountants to work with, thanks to technology, geography no longer has to be a barrier. We have clients spread throughout the UK, and we strive to deliver the same level of service whether they are five miles away or 50 miles away."

Emma's approach:

I imagine myself as a business owner and what I would expect from my adviser and use this to inform my approach to supporting clients.



What sets George Hay apart from its competitors?

Critical thinking, continuity and client relationships.